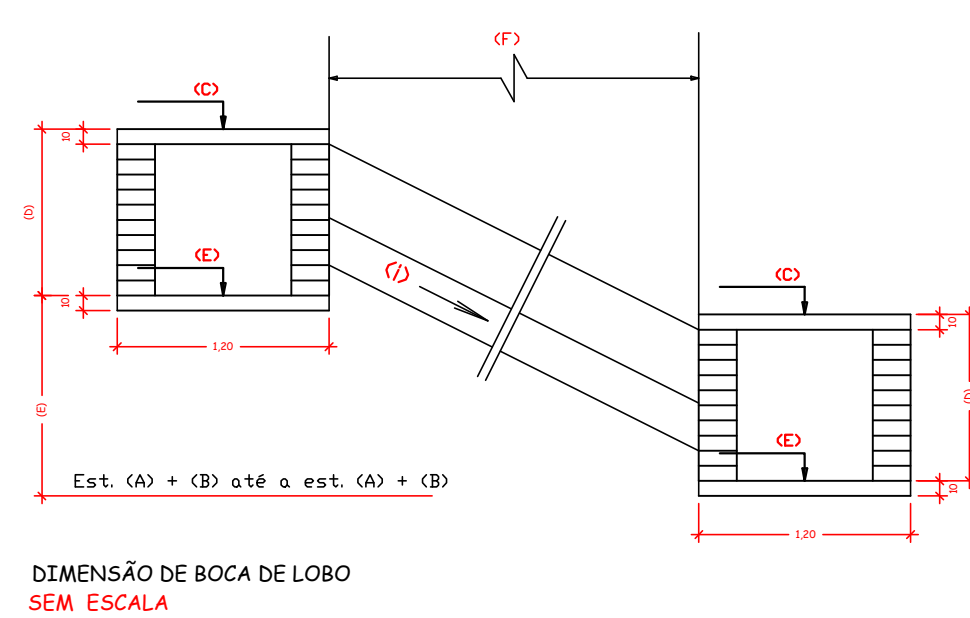


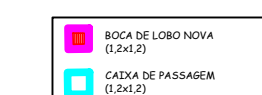
LEGENDA

- EXECUÇÃO DE PAVIMENTAÇÃO – CBUQ
- PAVIMENTAÇÃO EM PARALELEPÍEDO
- CALÇADA EXISTENTE
- PONTO DE ÔNIBUS
- BOCA DE LOBO – GRELHA (1,20M X 1,20M)
- CAIXA DE PASSAGEM (1,20M X 1,20M)
- MEIO FIO REBAIXADO (ENTRADA DE GARAGEM)
- ENTRADA DE GARAGEM
- SENTIDO DO ESCOAMENTO
- DIVISA IMAGINÁRIA
- POÇO DE VISITA – PV
- POSTE – PT

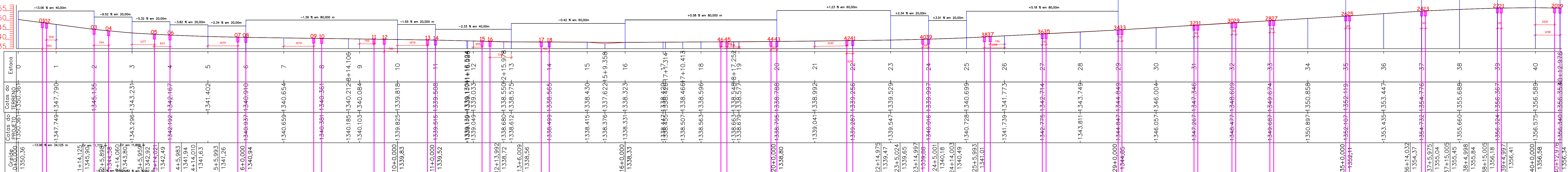


ESPECIFICAÇÕES DAS BOCAS DE LOBO

NºBL	Estaca (A)	Cota - Estaca +	Ino. do Greide/100*	Dist. Da BL até Estaca + (A)	Altura MF +	Ino. Pav./100*	Larg. Pista =	Cota Tampa da Boca de Lobo (C)	Profundidade da Boca de Lobo (D)	Cota Fundo BL (E)	Ligações Entre as Bocas de Lobo	Diferença de Altura (E)	Dist. Entre BL (F)	Inclinação (%)
01	1	1347.749	-13.06	5.50	0.15	2	3.00	1347.121	1	1346.121	01 →	02	0.03	7.36 -0.47
02	1	1347.749	-13.06	5.00	0.15	2	3.00	1347.186	1.1	1346.086	03 →	04	0.78	11.48 -6.81
03	2	1345.190	0.00	0.00	0.15	2	3.00	1345.280	1.1	1344.180	02 →	04	2.69	32.72 -8.22
04	2	1345.135	-9.52	7.64	0.15	2	3.00	1344.498	1.1	1343.398	05 →	06	0.41	8.23 -5.02
05	3	1343.231	-5.32	11.77	0.15	2	3.00	1342.695	1.1	1341.595	04 →	06	2.22	29.69 -7.46
06	4	1342.192	0.00	0.00	0.15	2	3.00	1342.282	1.1	1341.182	07 →	08	1.62	8.21 -19.79
07	5	1342.192	2.34	15.79	0.15	2	3.00	1342.651	1.1	1341.551	06 →	08	1.26	38.95 -3.22
08	6	1340.937	0.00	0.00	0.15	2	3.00	1341.027	1.1	1339.927	09 →	10	0.49	8.21 -6.00
09	7	1340.654	1.39	15.79	0.15	2	3.00	1340.963	1.1	1339.863	08 →	10	0.56	39.52 -1.41
10	8	1340.381	0.00	0.00	0.15	2	3.00	1340.471	1.1	1339.371	11 →	12	0.48	8.31 -5.79
11	9	1340.103	1.39	7.59	0.15	2	3.00	1340.299	1.1	1339.199	10 →	12	0.65	31.05 -2.10
12	10	1339.825	-1.39	7.00	0.15	2	3.00	1339.818	1.1	1338.718	13 →	14	0.55	8.48 -6.54
13	10	1339.825	1.55	15.79	0.15	2	3.00	1340.160	1.1	1339.060	12 →	14	0.21	26.22 -0.81
14	11	1339.515	0.00	0.00	0.15	2	3.00	1339.605	1.1	1338.505	15 →	16	0.49	8.64 -5.67
15	12	1339.049	2.33	4.55	0.15	2	3.00	1339.245	1.1	1338.145	14 →	16	0.85	28.77 -2.95
16	13	1338.612	-0.42	11.24	0.15	2	3.00	1338.655	1.0	1337.555	17 →	18	0.08	8.71 -0.95
17	14	1338.499	-0.42	4.21	0.15	2	3.00	1338.571	1.0	1337.571	16 →	18	0.17	28.62 -0.58
18	14	1338.499	0.00	0.00	0.15	2	3.00	1338.589	1.1	1337.489	19 →	20	0.05	8.15 -0.64
19	40	1356.575	1.81	12.89	0.15	2	3.00	1356.900	1.1	1355.800	21 →	22	0.12	8.15 -1.50
20	40	1356.575	1.81	10.09	0.15	2	3.00	1356.848	1.1	1355.748	20 →	22	0.43	28.30 -1.53
21	39	1356.324	1.11	1.99	0.15	2	3.00	1356.436	1	1355.436	23 →	24	0.09	8.15 -1.11
22	39	1356.324	0.00	0.00	0.15	2	3.00	1356.414	1.1	1355.314	22 →	24	1.59	38.94 -4.09
23	37	1354.732	4.56	1.99	0.15	2	3.00	1354.813	1.1	1353.813	25 →	26	0.13	8.17 -1.62
24	37	1354.732	0.00	0.00	0.15	2	3.00	1354.822	1.1	1353.722	24 →	26	2.63	38.54 -6.81
25	35	1352.107	6.64	1.99	0.15	2	3.00	1352.229	1.1	1351.229	27 →	28	0.12	8.18 -1.47
26	35	1352.107	0.00	0.00	0.15	2	3.00	1352.197	1.1	1351.097	26 →	28	2.42	39.05 -6.20
27	33	1349.687	6.05	1.99	0.15	2	3.00	1349.897	1.1	1348.797	29 →	30	0.12	8.18 -1.47
28	33	1349.687	0.00	0.00	0.15	2	3.00	1349.777	1.1	1348.677	28 →	30	1.21	20.99 -5.76
29	32	1348.477	6.05	1.99	0.15	2	3.00	1348.687	1.1	1347.587	31 →	32	0.12	9.23 -1.30
30	32	1348.477	0.00	0.00	0.15	2	3.00	1348.567	1.1	1347.467	30 →	32	1.21	16.30 -7.42
31	31	1347.267	6.05	1.99	0.15	2	3.00	1347.477	1.1	1346.377	33 →	34	0.12	9.21 -1.31
32	31	1347.267	0.00	0.00	0.15	2	3.00	1347.357	1.1	1346.257	32 →	34	2.42	39.88 -6.07
33	29	1344.847	6.05	1.99	0.15	2	3.00	1345.057	1.1	1343.957	35 →	36	0.10	9.21 -1.12
34	29	1344.847	0.00	0.00	0.15	2	3.00	1344.937	1.1	1343.837	34 →	36	2.07	39.90 -5.19
35	27	1342.775	5.18	1.99	0.15	2	3.00	1342.968	1.1	1341.868	37 →	38	0.16	9.22 -1.74
36	27	1342.775	0.00	0.00	0.15	2	3.00	1342.865	1.1	1341.765	36 →	38	1.58	27.87 -5.68
37	26	1341.739	-5.18	7.46	0.15	2	3.00	1341.443	1.1	1340.343	39 →	40	0.11	9.26 -1.17
38	26	1341.739	-5.18	10.55	0.15	2	3.00	1341.283	1.1	1340.183	38 →	40	1.28	30.64 -4.19
39	24	1340.016	0.00	0.00	0.15	2	3.00	1340.106	1.1	1339.006	41 →	42	0.14	9.29 -1.48
40	24	1340.016	-3.51	3.09	0.15	2	3.00	1339.998	1.1	1338.898	40 →	42	0.76	38.55 -1.97
41	21	1338.287	0.00	0.00	0.15	2	3.00	1338.377	1.1	1337.277	43 →	44	1.14	9.29 -12.25
42	21	1338.041	1.23	16.82	0.15	2	3.00	1338.339	1.2	1337.139	42 →	44	0.49	38.69 -1.27
43	20	1338.795	0.00	0.00	0.15	2	3.00	1338.885	1.1	1337.785	45 →	46	0.12	10.01 -1.18
44	20	1338.795	-1.23	3.09	0.15	2	3.00	1338.847	1.2	1337.647	44 →	46	0.13	28.07 -0.47
45	19	1338.679	-0.58	6.34	0.15	2	3.00	1338.732	1.1	1337.632				
46	19	1338.679	-0.58	9.48	0.15	2	3.00	1338.714	1.2	1337.514				



PERFIL RUA DOMINGOS MARTORANO.per



AMURES ASSOCIAÇÃO DE MUNICÍPIOS DA REGIÃO SERRANA

PREFEITURA MUNICIPAL DE SÃO JOAQUIM - SC

ASSESSORIA TÉCNICA

OBRA

Projeto de Pavimentação Rua Domingos Martorano Pav. em CBUQ

Dimensões de Boca de Lobo Perfil Longitudinal Drenagem Pluvial

Desenho: Indimara de Oliveira Ribeiro Topografia: Vencio Escala: Indicada Data: 07/2020