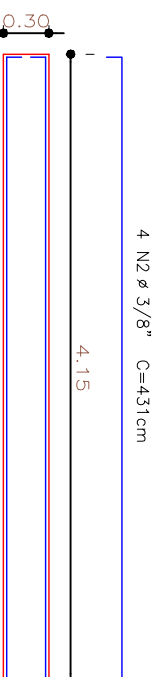
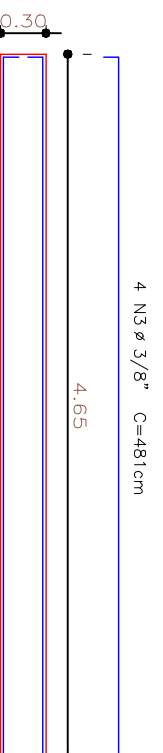


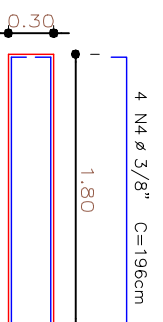
VIGA VI  
ESCALA 1:50



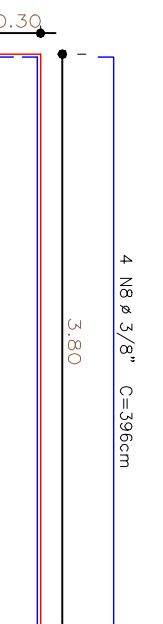
VIGA V2, V4, V6  
ESCALA 1:50



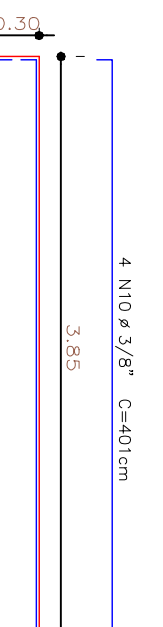
VIGA V3, V5  
ESCALA 1:50



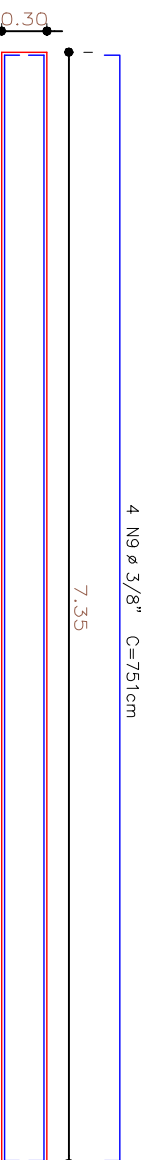
VIGA V7  
ESCALA 1:50



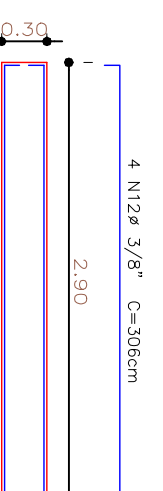
VIGA VII  
ESCALA 1:50



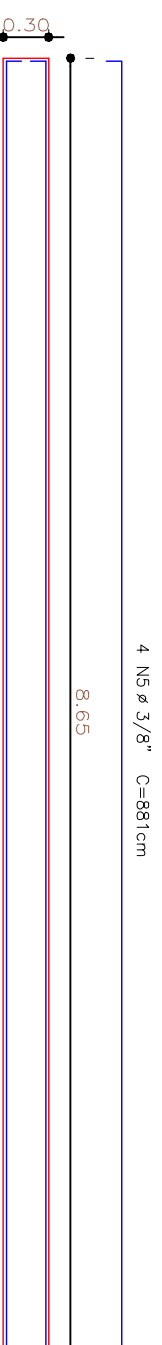
VIGA V13  
ESCALA 1:50



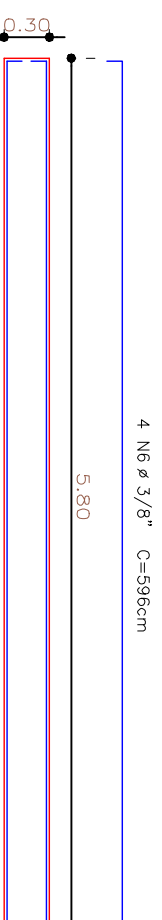
VIGA V12  
ESCALA 1:50



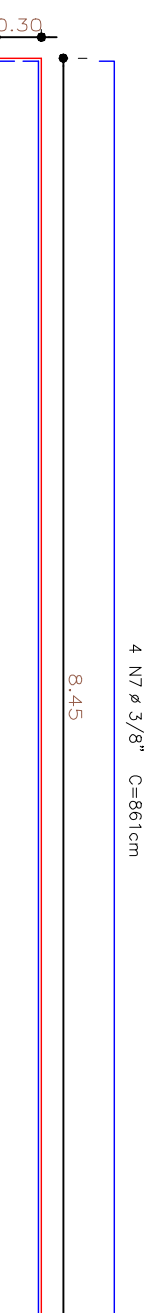
VIGA V15, V16  
ESCALA 1:50



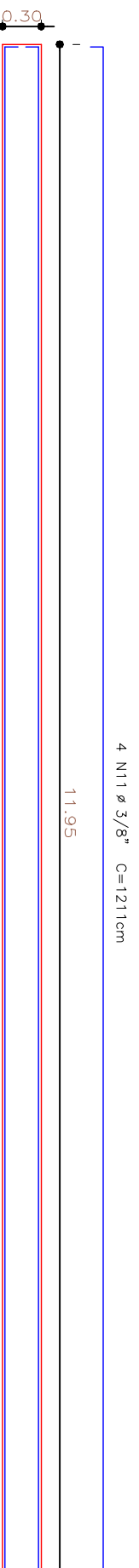
VIGA V8  
ESCALA 1:50



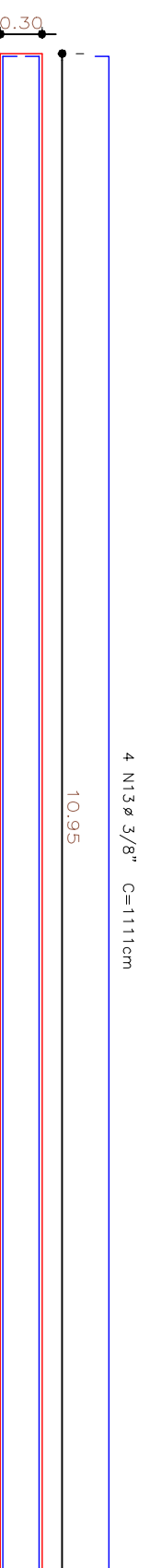
VIGA V9  
ESCALA 1:50



VIGA V10  
ESCALA 1:50



VIGA V14  
ESCALA 1:50



VIGA V17  
ESCALA 1:50



PREFEITURA MUNICIPAL DE SÃO JOAQUIM  
PROJETO ESTRUTURAL

CONSELHO TUTELAR

RUA GASPARINO DUTRA - BAIRRO CENTRO - SÃO JOAQUIM - SC

EQUIPE TÉCNICA:

DIRETORA DE PROJETOS ESPECIAIS: MILENA MITTE SATO - CAU A-40216-8

ARQUITETA E URBANISTA MARIA DE FÁTIMA SOUSA - CAU A 64851-5  
ENGENHEIRO CIVIL LUCIANO BROERING ALVES - CREA-SC 124887-3  
ENGENHEIRO CIVIL NERI A. CHIODELLI - CREA-SC 5854  
TÉC. EM GEOMENSURA CLEBER O. C. MEDEIROS - CREA-SC 078884-2

ESCALA 1/50

ÁREA 118,75m<sup>2</sup>

FOUN 02/05

DATA: JANEIRO/2022