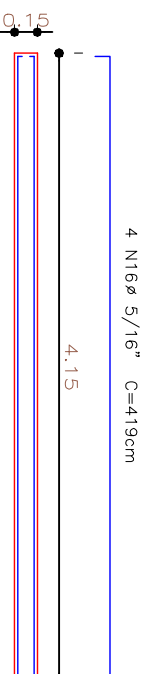
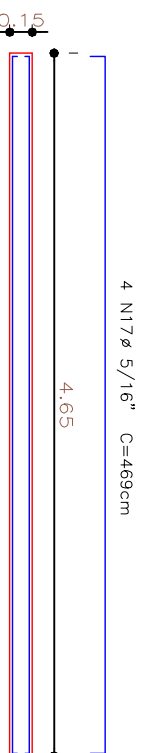


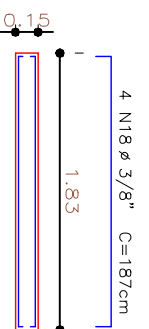
VIGA V18
ESCALA 1:50



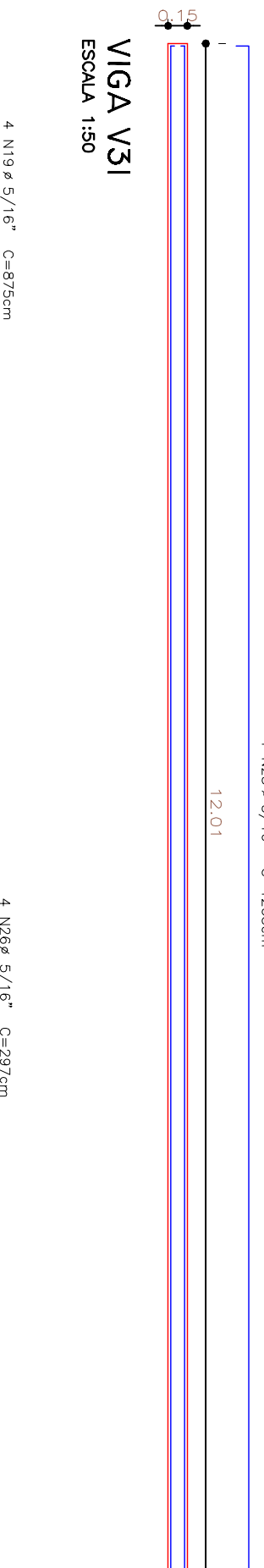
VIGA V19, V21, V23
ESCALA 1:50



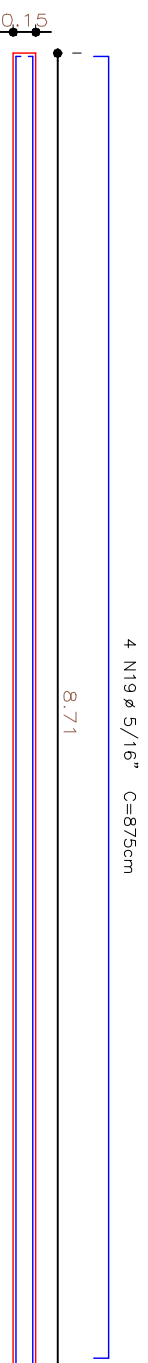
VIGA V20, V23
ESCALA 1:50



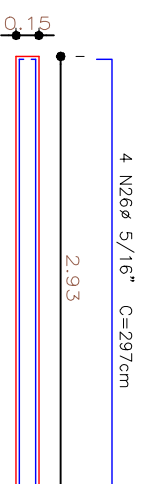
VIGA V24
ESCALA 1:50



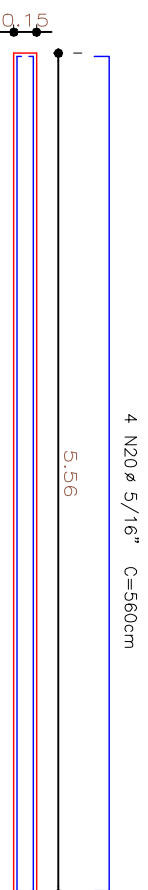
VIGA V31
ESCALA 1:50



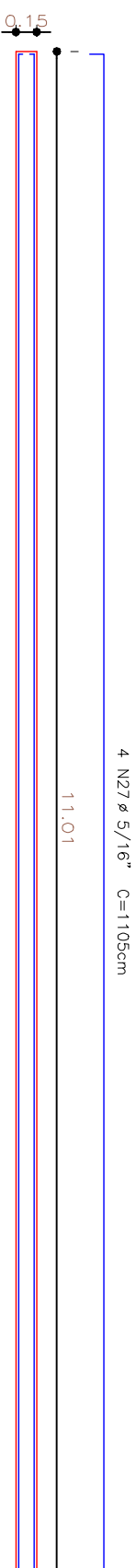
VIGA V25
ESCALA 1:50



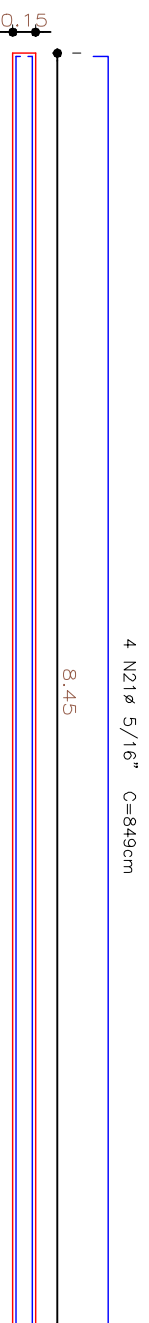
VIGA V32, V33
ESCALA 1:50



VIGA V26
ESCALA 1:50



VIGA V34
ESCALA 1:50



VIGA V27
ESCALA 1:50



PREFEITURA MUNICIPAL DE SÃO JOAQUIM
PROJETO ESTRUTURAL

CONSELHO TUTELAR

RUA GASPARINO DUTRA – BAIRRO CENTRO – SÃO JOAQUIM – SC

EQUIPE TÉCNICA:

DIRETORA DE PROJETOS ESPECIAIS: MILENA MITTE SATO – CAU A-40216-8

ARQUITETA E URBANISTA MARIA DE FÁTIMA SOUSA – CAU A 64851-5
ENGENHEIRO CIVIL LUCIANO BROERING ALVES – CREA-SC 124887-3
ENGENHEIRO CIVIL NERI A. CHIODELLI – CREA-SC 5854
TÉC. EM GEOMENSURA CLEBER O. C. MEDEIROS – CREA-SC 078884-2

ESCALA 1/50

ÁREA

118,75m²

FOLHA 04/05

DATA: JANFEIRO/2022