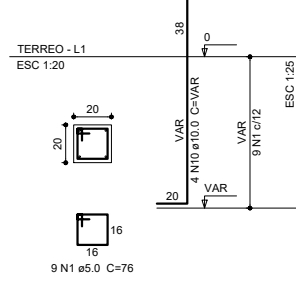
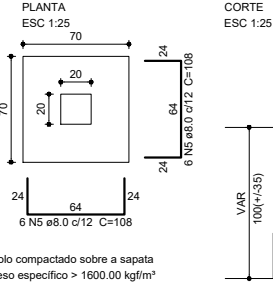


P6=P7

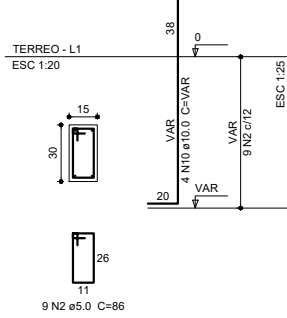


S6=S7

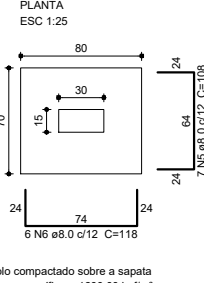


Solo compactado sobre a sapata peso específico > 1600.00 kg/m³

P35

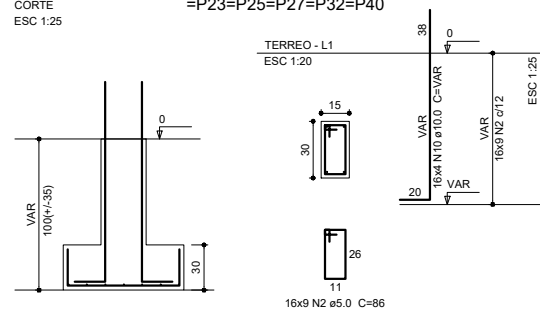


S35



Solo compactado sobre a sapata peso específico > 1600.00 kg/m³

P2=P3=P4=P5=P10=P12=P15=P16=P18=P19=P22
=P23=P25=P27=P32=P40



Relação do aço

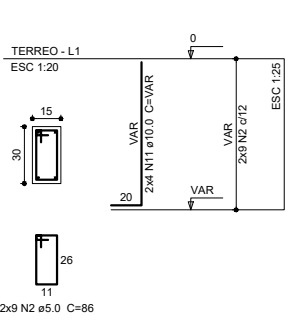
ACO	N	DIAM (mm)	QUANT (Barras)	UNIT (cm)	C.TOTAL (cm)
CA50	1	5.0	18	76	1368
	2	5.0	369	86	31734
	3	5.0	54	26	1404
	4	5.0	18	106	1908
	5	8.0	206	108	22248
	6	8.0	252	118	29736
	7	8.0	70	133	9310
	8	8.0	57	128	7296
	9	8.0	35	143	5005
	10	10.0	176	VAR	VAR
	11	10.0	28	VAR	VAR
	12	12.5	20	94	1880

Resumo do aço

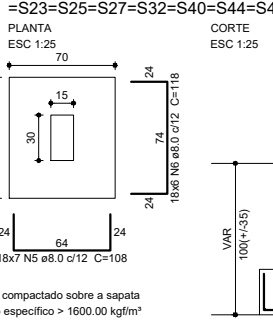
ACO	DIAM (mm)	C.TOTAL (m)	PESO + 10% (kg)
CA50	8.0	736	319.4
	10.0	301	204.1
	12.5	18.8	19.9
CA60	5.0	364.2	61.7
PESO TOTAL (kg)			
CA50			543.4
CA60			61.7

Volume de concreto (C-25) = 10.84 m³
Área de forma = 84.17 m²

P44=P45

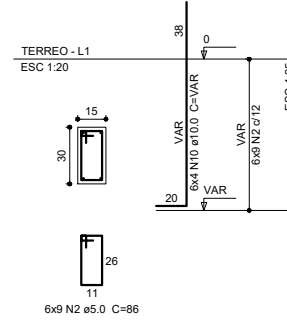


S2=S3=S4=S5=S10=S12=S15=S16=S18=S19=S22
=S23=S25=S27=S32=S40=S44=S45

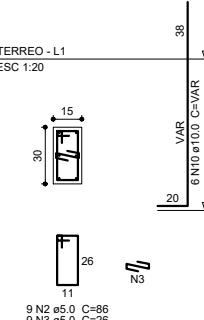


Solo compactado sobre a sapata peso específico > 1600.00 kg/m³

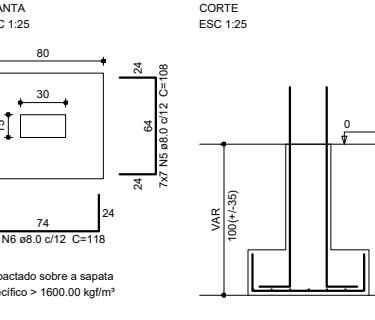
P1=P14=P20=P26=P39=P43



P36

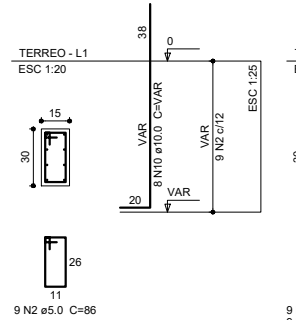


S1=S14=S20=S26=S36=S39=S43

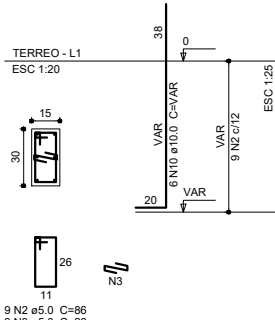


Solo compactado sobre a sapata peso específico > 1600.00 kg/m³

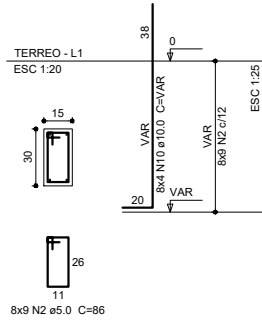
P13



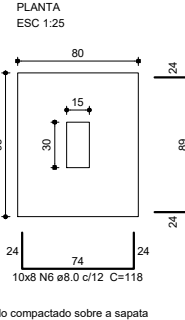
P30



P8=P9=P17=P28=P31=P37=P38=P42

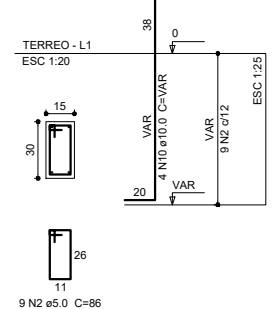


S8=S9=S13=S17=S28=S30=S31=S37=S38=S42

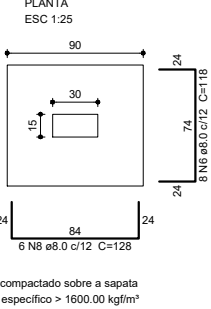


Solo compactado sobre a sapata peso específico > 1600.00 kg/m³

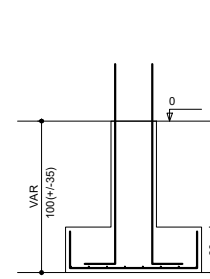
P11=P41



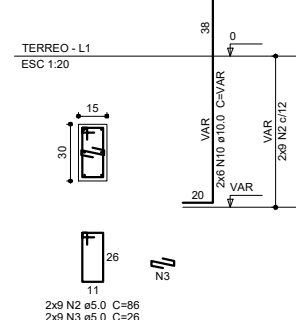
S11=S41



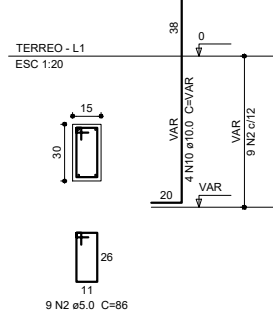
CORTE ESC 1:25



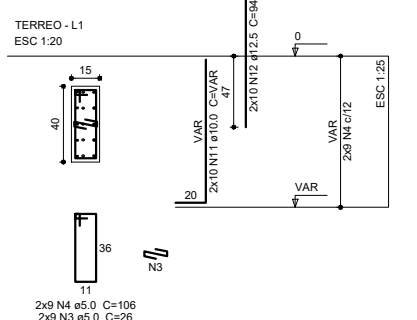
P21=P29



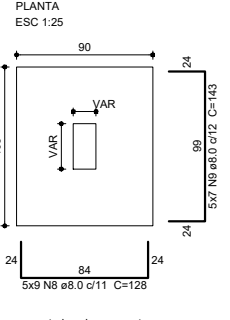
P24



P33=P34

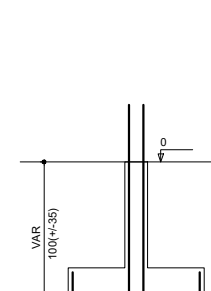


S21=S24=S29=S33=S34



Solo compactado sobre a sapata peso específico > 1600.00 kg/m³

CORTE ESC 1:25



PREFEITURA MUNICIPAL DE SÃO JOAQUIM

PROJETO ESTRUTURAL

UNIDADE BÁSICA DE SAÚDE - UBS

RUA FRANCISCO ASSIS MARTINS DUTRA, SANTA PAULINA

EQUIPE TÉCNICA:

ARQUITETA: M^o DE FÁTIMA SOUSA NUNES MUNIZ - CAU A64851-5
 ENG. CIVIL: DIEGO MESQUITA RIBEIRO - CREA-SC 172593-2
 ENG. CIVIL: ISMAEL SILVA PEREIRA - CREA-SC 178954-1
 ENG. CIVIL: MALRO BILL SILVA BARBOSA - CREA-SC 183130-1
 ENG. CIVIL: GUSTAVO DA SILVA - CREA-SC 206543-8
 T^{EC}. EM GEOMENSURA: CLEBER O. C. MEDEIROS - CFT 2500652297